



# LLS News

06/03/2026



Dear families

We are delighted to share the news that our Residential provision has been graded as Outstanding for the third year running. For more details and a link to the full report please read on to the next page.

Today you will have received your child/young person's Personal Learning Goals (PLGS) for Spring 2/Summer 1. If you have any questions please contact the class teacher.

Thank you to everyone who dressed as their favourite book character for World Book Day yesterday. We will share some photos of the day in next week's newsletter.

Have a lovely weekend.



## Star of the Week

**Aariah** for having a fantastic hydro session this week! Aariah was very relaxed in the water and did some lovely rocket ship blast offs on the wall.

**Joseph** for his interactions and engagement, whilst on a recent community trip.

**Drew** for being able to join a local trip, listen and follow instructions.

**Arjun** for listening to letter sounds, blending together and saying whole CVC words. For listening to whole CVC words and sounding out individual letters to spell the word.



## Events and dates to remember



### Spring Term Dates

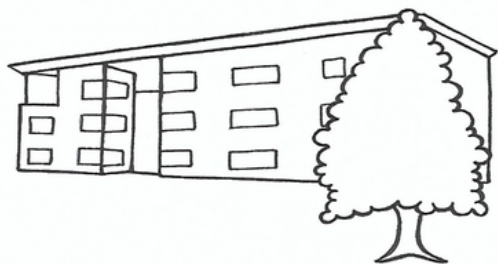
**Friday 20<sup>th</sup> March**  
Comic Relief's Red Nose Day  
Wear something red

**Friday 27<sup>th</sup> March 2026**  
Last day of term for students - School finishes at 1.30pm

The term dates for 2025/2026 and 2026/2027 can be found on the school website <https://www.lindenlodge.wandsworth.sch.uk/termdates>



# Residential Provision Ofsted Inspection Report



Following our Ofsted Social Care Inspection of Residential inspection the report has now been finalised.

The Inspectors graded us as:

Overall experiences and progress of children and young people is **Outstanding**

taking into account:

How well children and young people are helped and protected **Outstanding**

The effectiveness of leaders and managers **Outstanding**

The journey to Outstanding (3x) has been incredibly satisfying. We have faced many challenges and tackled them with professionalism which has highlighted the integrity of the provision.

Well done to everyone!

Sarah and Monika  
Co-Headteachers

Message from Ann Debono, Southfields MAT Trustee  
**What a fantastic outcome for the children and for the school.**

**Gosh what a team effort - you have all worked so hard for this amazing outcome.**

**Great news and well done to the whole team who contributed and of course to the wonderful young residents themselves!!**

Message from Jackie Valin, CEO, Southfields MAT  
**The feedback was so lovely to hear. All credit to Danny, Vicky and Sarah Well done.**

Message from Sarah Taylor, Southfields MAT Chair of Trustees  
**Fabulous outcome! Excellent work.**

Message from Sian Tyler, Southfields MAT Trustee  
**Very many congratulations to everyone who helped achieve this amazing result.**

Message from Adam Ockelford, Linden Lodge Chair of Governors  
**Fabulous outcome! Excellent work.**

Message from Stuart Gooden, Southfields MAT Trustee  
**Fabulous outcome! Excellent work.**

Message from Sally Winfield, LLCT  
**It's fantastic news and a reflection of your continued hard work and excellence.**

Message from Dr Suren Moodliar, Southfields MAT Trustee  
**Excellent news! Well done to the entire team**

Message from Mary Golden, Southfields MAT Trustee  
**What a great report to read. Well done everyone on a fantastic result. Hope you will get an opportunity to celebrate**

If you would like to read the full report please click here  
<https://www.lindenlodge.wandsworth.sch.uk/ofsted> or here  
<https://reports.ofsted.gov.uk/provider/10/SC010255>

## Learning@Linden Lodge - Curriculum Theme: Nature

### Bassoon class visit an exhibition of their nature artwork

Bassoon Class' nature-inspired artworks about Wandsworth are on display at Southside Shopping Centre and Battersea Power Station from 1–23 March 2026.

Working with Wandsworth Council, Bassoon Class created artwork inspired by the plants and animals found around Wandsworth. We were delighted to see their pieces featured on a large banner alongside banners created by other local schools at Southside Shopping Centre.

Families visiting the exhibition sites can also find more information and take part in related workshops: <https://welcometowandsworth.com/whats-on/event/vAt-our-beautiful-neighbourhood/>



## Learning@Linden Lodge

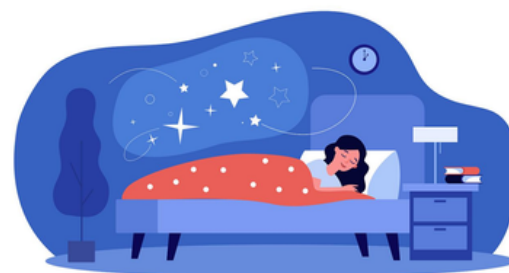
### Residential

Young people took a short trip to the local shop this week. They were encouraged to make choices on what to buy, engage with the shop assistant and practice road safety.



## World Sleep Day - 13 March 2026

As we sleep and how essential it is to our life and function, here are some tips on setting up a healthy bedtime routine:



2 hours before bedtime	Do a physical activity- dance to music, try some yoga poses, help with the laundry/dishes, log roll on the carpet etc. Start reducing fluid intake Spend some quality time together to fill their emotional cup
1 hour before bedtime	Bath time- try blow bubbles in the bath Tidy up toys and distractions Create a low stimuli environment- dim the lights, remove clutter, play calm, familiar music etc. Explore a vibrating toy/ massager Reduce screen time
30 minutes before bedtime	Introduce a sleep scent like lavender or camomile Enjoy a massage Cuddle/ blanket wrap Night time story or song Meditation or breathing techniques Listen to an audio book

Please chat to your named OT if you need any extra support around this.



## National Nutrition Month

- Start your day with a healthy breakfast 
- Cook more, eat out less 
- Buy food that are in season 
- Drink more water 
- Make smart choices when eating out 
- Eat more plant-based food 
- Watch portion sizes 
- Explore new flavours 
- Reduce added sugar 
- Stay active 

For more ideas click here:  
<https://www.eatright.org/health/wellness/awareness-campaigns/50-ideas-to-get-involved-in-national-nutrition-month>

Click here to access downloadable resources in a variety of languages:  
<https://www.eatright.org/national-nutrition-month/resources>



### Linden Lodge Summer Scheme 2026

The preparations for this year's Summer Scheme at Linden Lodge are well underway and we would like to invite your child to attend!

Letters to apply for the scheme have been sent home this week. All applications must be returned by Monday 23<sup>rd</sup> March 2026.

Summer Scheme will run for 2 weeks:  
Monday 20<sup>th</sup> July - Friday 24<sup>th</sup> July 2026, 9.30-15.45.  
Monday 27<sup>th</sup> July - Friday 31<sup>st</sup> July 2026, 9.30-15.45.  
Your child may attend for one week or the full two weeks.



## Summer Scheme 2026

Linden Lodge School

20<sup>th</sup> July - 24<sup>th</sup> July  
27<sup>th</sup> July - 31<sup>st</sup> July

Join this year's fun-filled Summer Scheme with daily enriching activities and experiences for all!

For more information please email: [summerscheme@lindenlodge.org.uk](mailto:summerscheme@lindenlodge.org.uk)